

MEDIA UNIT 3 – PRODUCTION EXERCISE 1

Mrs Müller & Miss Asbury

Giorgia Deslandes
12B

INTENTION:

What are you intending on focusing on during this exercise. This might include any of the following:

- *aesthetics and/or structural capacities and/or characteristics of a media product to be explored*
- *technical equipment to be operated*
- *applications used to be applied to develop particular skills to present specific ideas to achieve particular effects*

For my first production exercise I am intending to further my knowledge and skills in the program Final Cut Pro 7. Specifically, I will be looking at how to use and create transitions using both the transitions already built into the program and my own manual transitions. I am looking at this in particular as I am not very experienced in the program and am intending to use it to create my final product. Knowing how to create transitions between scenes and edit together footage will be essential skills I will need when creating my final which is why I have chosen to focus on these for my first production exercise.

I have filmed my friend Naomi walking through a door on my iPhone camera from several angles and am aiming to edit the sequence together using both built in and manual transitions. This will also help me to learn where all the tools are located within the program and how to use them. The transitions I am looking at including: fades, cross dissolves and manual fades, as these are most likely what I will be using most often in my final.

The most challenging part of this particular exercise will be creating manual fades as I have never used the program before and it involves using tools in the program am yet to familiarize myself with.

In order to help me with this process I looked up a tutorial on YouTube (url is listed below) which went through the following steps:

<http://www.youtube.com/watch?v=aX0J-rehgV8>

STEPS: (Built in transitions)

1. Import practice footage to work with
2. Establish an inpoint and an outpoint at the beginning and end of each clip to create a handle to work with
3. Drag/insert selected section/sections onto timeline
4. Open effects tab and select transition
5. Click icon and drag transition onto timeline between clips
6. Adjust length of transition by dragging edges

STEPS: (manual transitions- fade)

1. Clear timeline (if necessary)
2. Import footage to work with
3. Delete inpoints/outpoints (option x) (no handles)
4. Drag/insert full clip/clips onto timeline
5. Select pen tool from tool bar
6. Select points on clip with pen tool on opacity line to drag from
7. drag points down to create fade out, up to fade in

(To cross dissolve)

8. Drag a clip up to a second layer
9. Drag clip across so clips overlap (change how much they overlap to adjust length of transition)

EVALUATION:

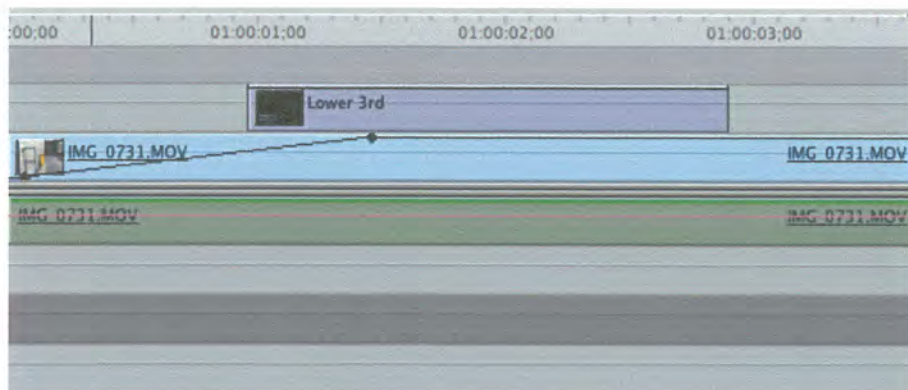
Explain how the completed exercise realises the stated intention. This should outline the extent to which the intention/s were realised.

Outline what possibilities and limitations you have discovered with the technical equipment.

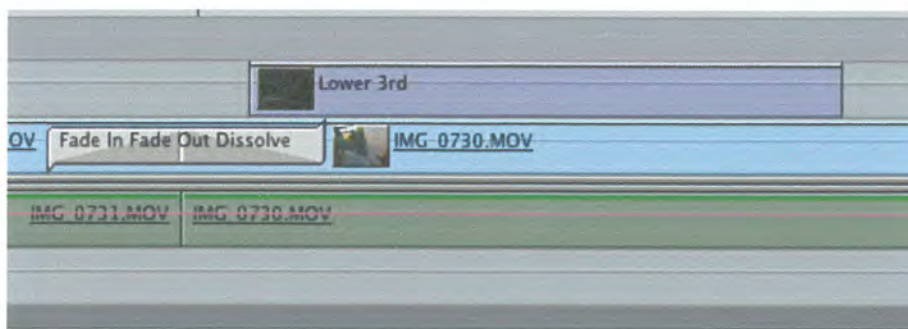
I'm really glad that I chose to focus on transitions for this exercise, as I encountered some difficulties that I am now relatively confident in dealing with. This will hopefully mean I am relatively capable at editing together footage and creating effective transitions in my final. The biggest challenge was making sure I created adequate handles for each clip using the in and out points so that the built in transitions were effective.

The steps I undertook were as follows:

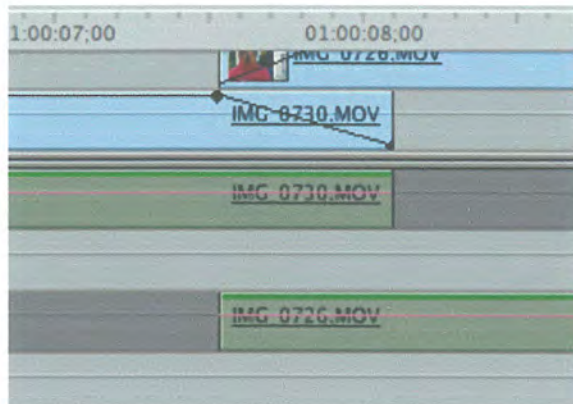
1. The first transition I chose to make a manual fade in and out which involved adjusting the opacity levels of the clip to create an incline or "fade". I had little trouble with this particular transition, as it is fairly straightforward.



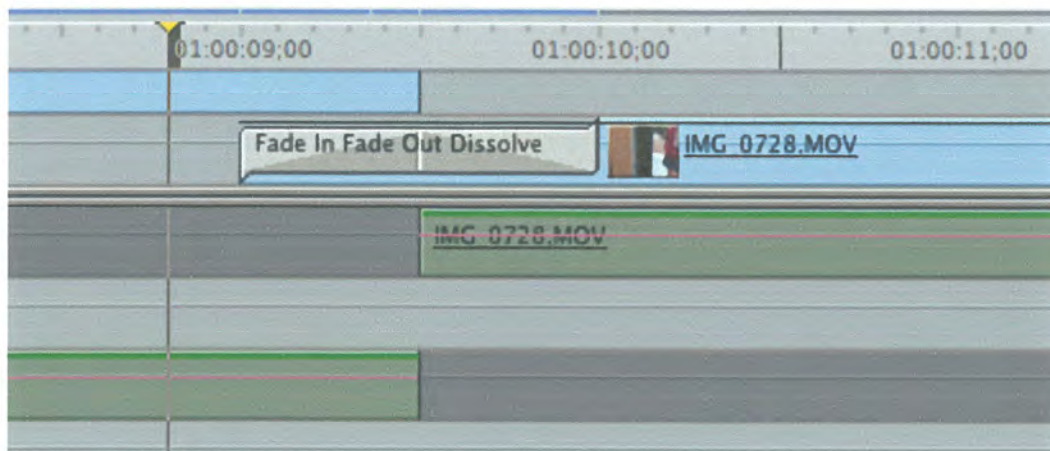
2. The second transition was also pretty simple and just involved creating a handle with the in and out points and then dragging the transition into place from the effects tab.



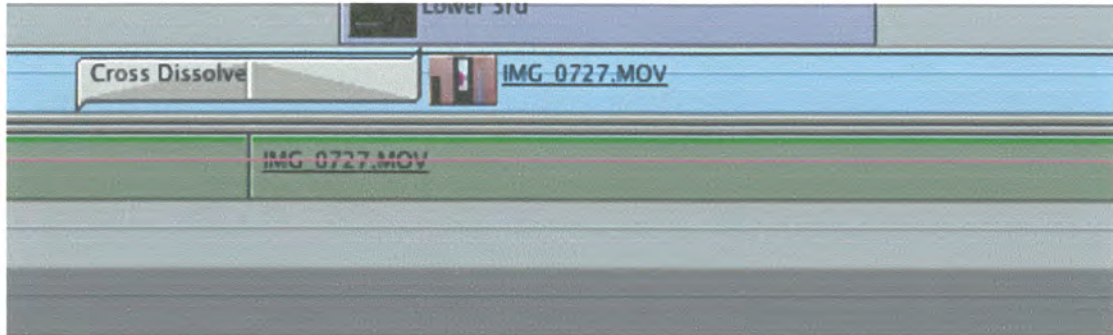
3. The third transition was a manual cross dissolve which is probably the most difficult transition I experimented with. It involved adjusting opacity levels as well as dragging one clip onto another layer, and then moving the clips so they overlap and opacity lines meet. This extra layer was difficult to work with, as it wasn't always visible on screen with all the titles. This meant I often accidentally moved it without realising making the whole clip to be out of time. Eventually I discovered the scroll section on the side and was able to then see the clip I was working with and adjust it more accurately.



4. The built-in fade was easy to work with as again it only really involved dragging into place and then adjusting in length. I had no problems with this particular transition.



5. The built in cross dissolve is very similar to the fade and again just involved dragging and positioning. I don't think I will be using this particular transition very much in my final, however I may experiment with the idea of dissolving and overlapping clips.



6. The final transition was just built-in fades so I had no trouble with them.



TILES:

I actually ended up learning how to adjust titles during this production exercise as well. This involved using the control panel to adjust fonts, size and boldness.

Name	Parameters	Nav
		✕
Text 1	built in fa	
Font	Lucida Grande	
Style	Plain	
Size	36	

Text 1	Built-in fade out	
Font	Century Gothic	
Style	Bold	
Size	24	

INTENTION:

What are you intending on focusing on during this exercise. This might include any of the following:

- *aesthetics and/or structural capacities and/or characteristics of a media product to be explored*
- *technical equipment to be operated*
- *applications used to be applied to develop particular skills to present specific ideas to achieve particular effects*

For my second production exercise I am planning on once again working in the program Final Cut Pro 7, but this time will be looking colour correction. Specifically I will be looking at some of the different ways to colour correct in order to work out the best method for me. The colour correctors I will be using will be colour corrector, 3-way colour corrector and RGB balance.

I will be using the same piece of footage repeatedly, changing the colour with each type of colour corrector to see the differences. From there I will hopefully be able to work out which corrector I will use to achieve certain effects.

The reason I have chosen colour correction as one of my production exercises is because I think it will be useful for making all the shots looks the same in my final, as obviously I will not be able to film the whole thing on one day, and the lighting will be different. It will also be useful in creating different tones and atmospheres in certain clips to generate an overall mood to the film.

Obviously each colour corrector will have a slightly different effect, so I will be looking at which corrector creates a tone I would like to replicate in my final.

STEPS:

Colour corrector:

- 1.Import footage
- 2.Drag "colour corrector" icon onto clip in timeline
- 3.Open colour correction panel in the viewer
- 4.Adjust settings for desired effect

3-way colour corrector:

- 1.Import footage
2. Drag "3 way colour corrector" icon onto clip in timeline
- 3.Adjust settings on all 3 dials for effects

RGB Balance:

- 1.Import footage
- 2.Drag "RGB balance" icon onto clip
3. Go to Filters tab and adjust RGB panel settings for desired effect

EVALUATION:

Explain how the completed exercise realises the stated intention. This should outline the extent to which the intention/s were realised.

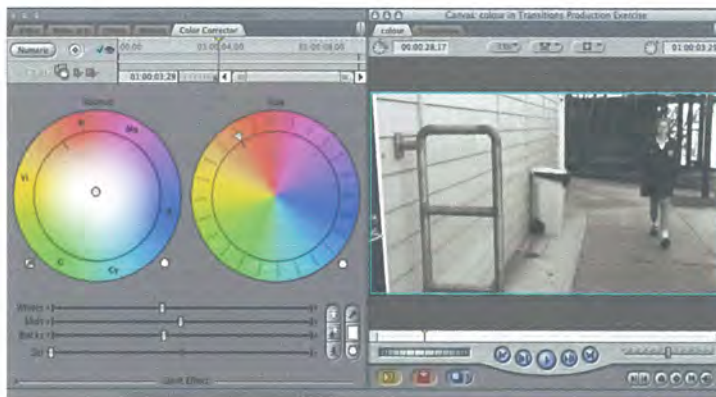
Outline what possibilities and limitations you have discovered with the technical equipment.

Using the different colour correctors I found that the colour corrector and 3-way colour corrector were the best to use. They allowed for slightly more subtle adjustments than the RGB balance, as RGB dealt more with colour (reds, blues and greens) than tones.

It was also interesting to play around with contrast and shadowing as well as colour through adjusting whites, blacks and mids, as each adjustment created a different filter and mood for the clip.

The first corrector I used was the standard colour corrector.

In the first clip I just wanted to see how black and white was created. This was achieved by bringing the saturation levels down. I had little trouble with this particular correction.



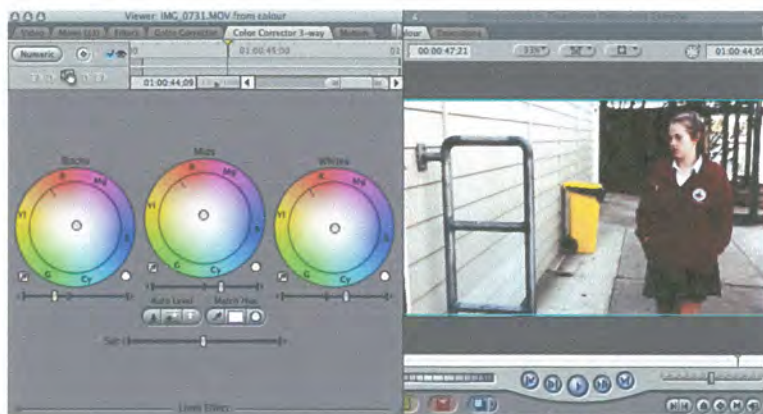
In the second clip I used standard color corrector again, this time adjusting the color balance. I shifted the balance towards red and yellow to try and create a "warm" effect similar to that of a warm day. Again I had little trouble with this correction.



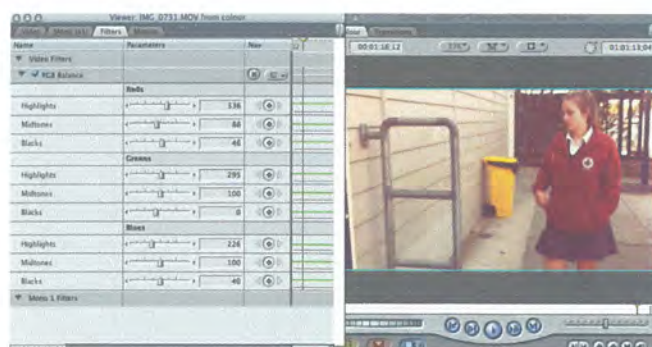
In the sixth clip I also used 3-way color corrector. Again I just adjusted the blacks, mids and whites, but this time towards blue in order to create a “cool” effect. This was relatively straightforward.



In the seventh clip I wanted to experiment with contrast. I used the 3 way color corrector but adjusted the scales below each dial rather than the dials themselves (tone rather than color). I eventually worked out a combination of black, mid and white tones that created a strong looking contrast effect.



In the eighth clip I used the RGB balance to create a “warm effect” by adjusting the levels towards red. I had a bit of trouble with this initially, as when I would drag the icon onto the clip and the panel wouldn't show up. However I eventually worked out I needed to tick the box RGB balance for it to show up. RGB was also difficult as it wasn't as easy to make subtle changes, as it deals predominantly with color. It is for this reason that I don't think I will use this particular corrector very much in my final.



For the final clip I also used the RGB balance, this time adjusting the levels towards blue in order to create a “cool” effect. This was relatively straight forward.

